

OT TIME: 7:43 AM

A1

DWG DATE: 10-2-2004
DESCRIPTION: PLANS
SCALE: AS NOTED
DWG. BY: RAM
STATUS: PRELIMINARY

COPYRIGHT 2006
Robert Mitchell
Unauthorized alteration or addition to this document is a violation of law.

O'ROURKE HOUSE GARAGE

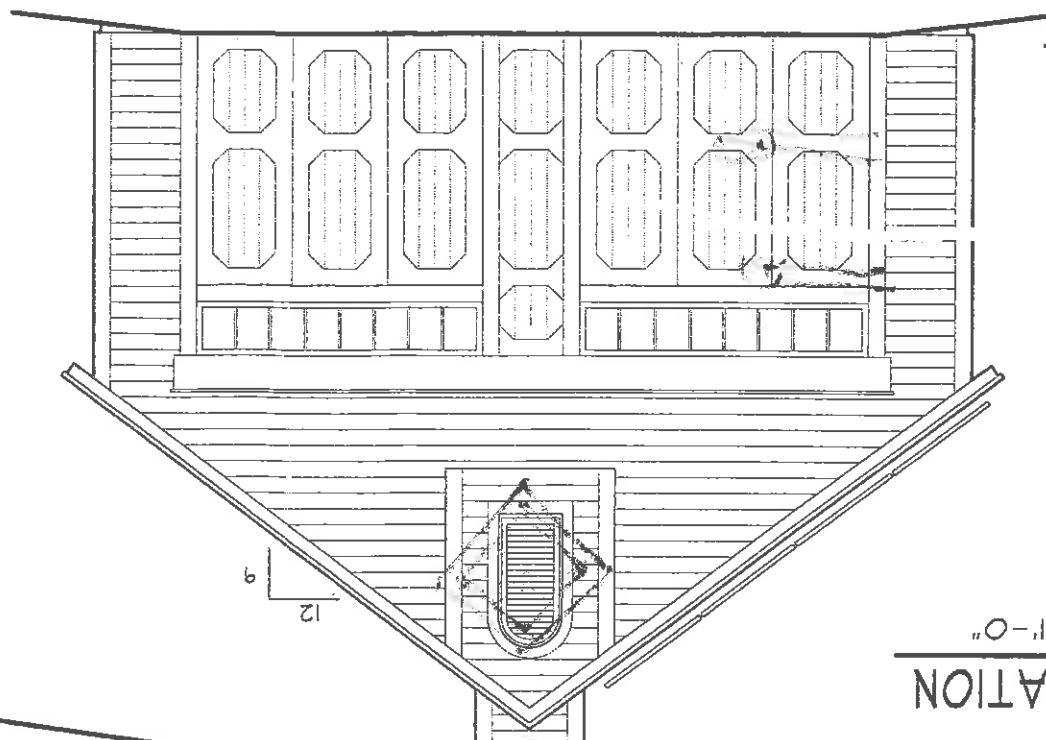
ROBERT MITCHELL ARCHITECT

29 THACHER PARK ROAD
VOORHEESVILLE, NEW YORK 12186
PH: 518/765-4571 FAX: 518/765-2950

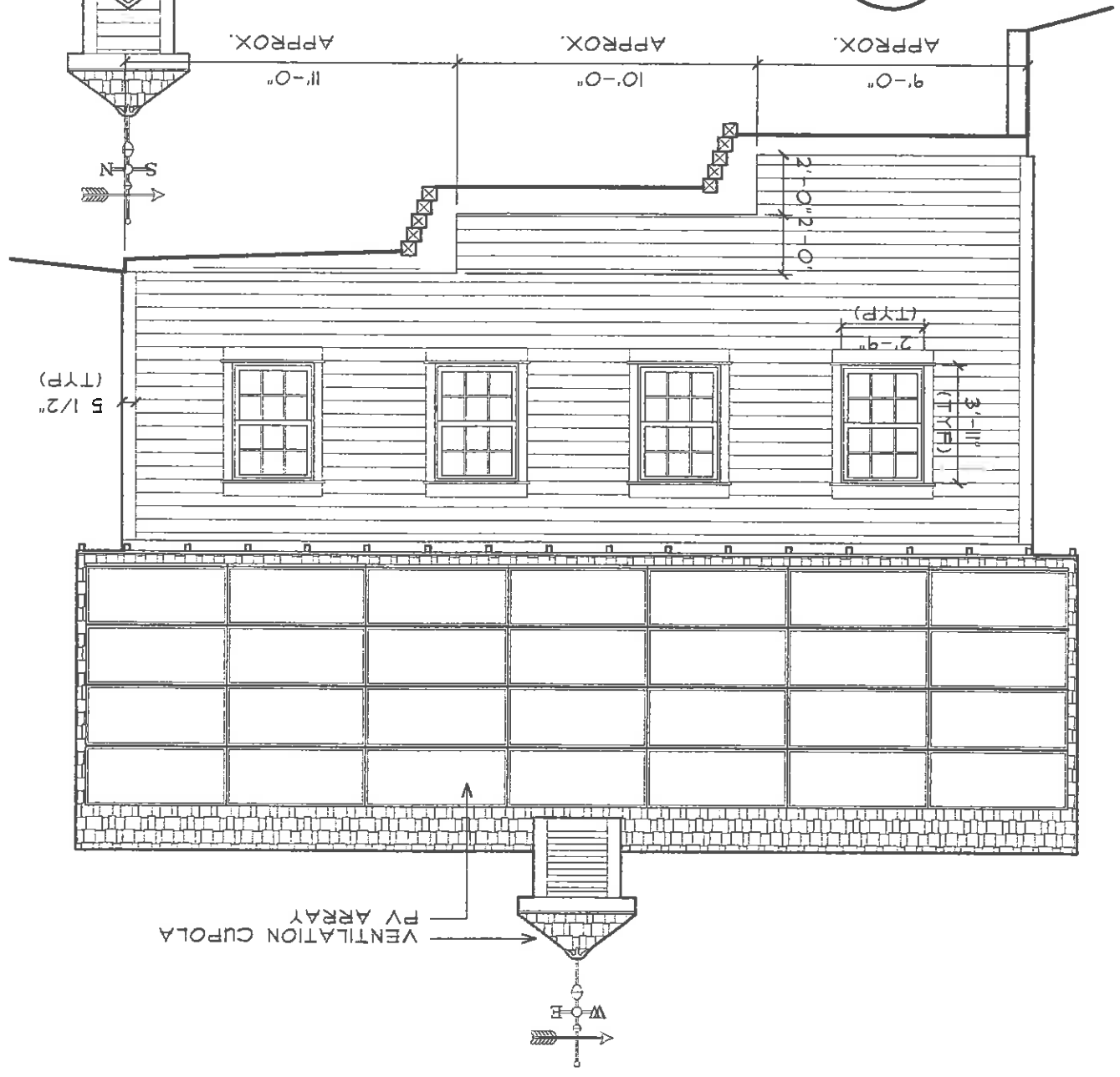
VOORHEESVILLE, NEW YORK

07-20-2008
#06-1996

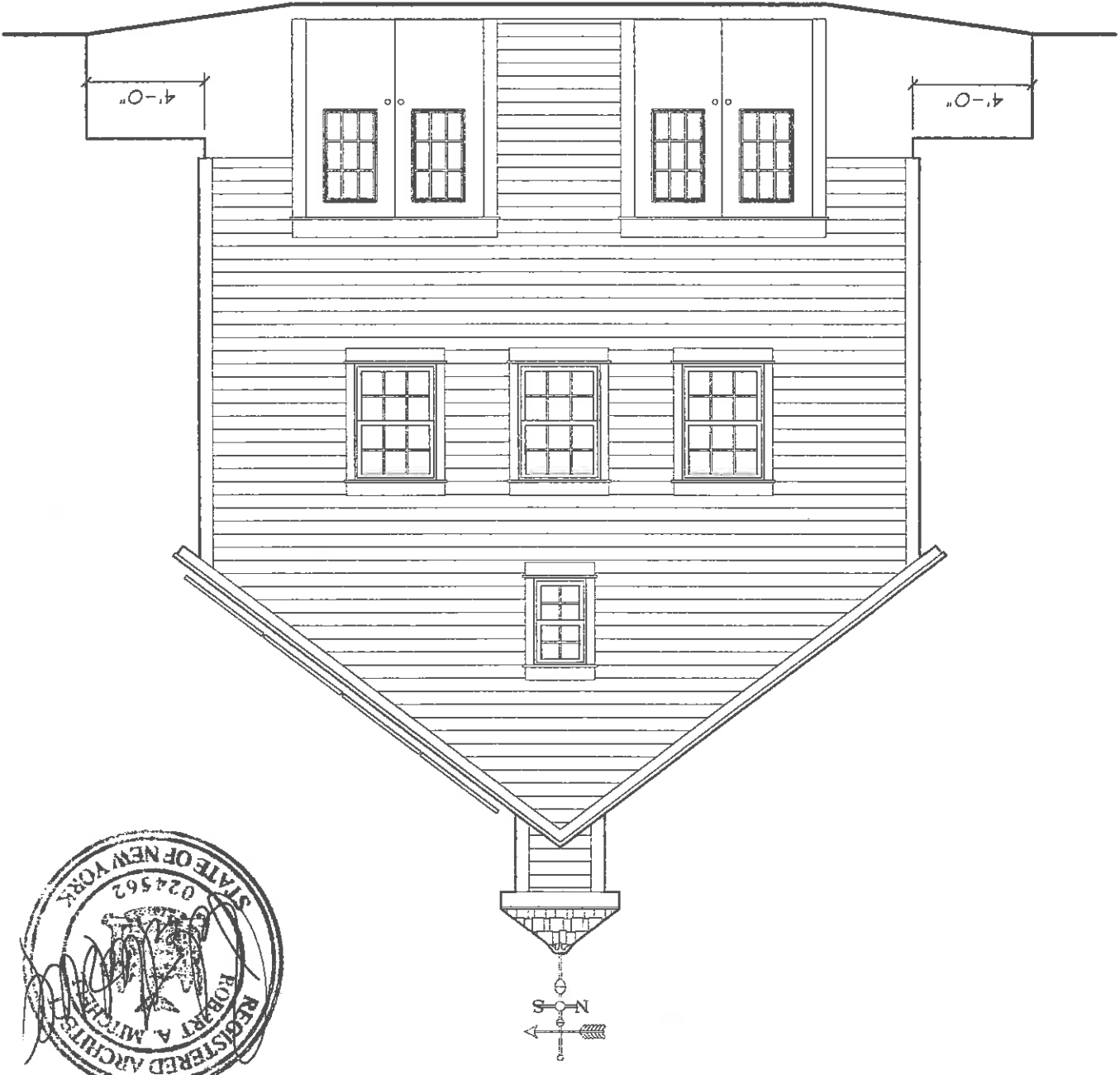
1 EAST ELEVATION
SCALE: 3/32" = 1'-0"



2 SOUTH ELEVATION
SCALE: 3/32" = 1'-0"



3 WEST ELEVATION
SCALE: 3/32" = 1'-0"



DATE: 10-2-2004
DWG DATE: 10-2-2004
A2

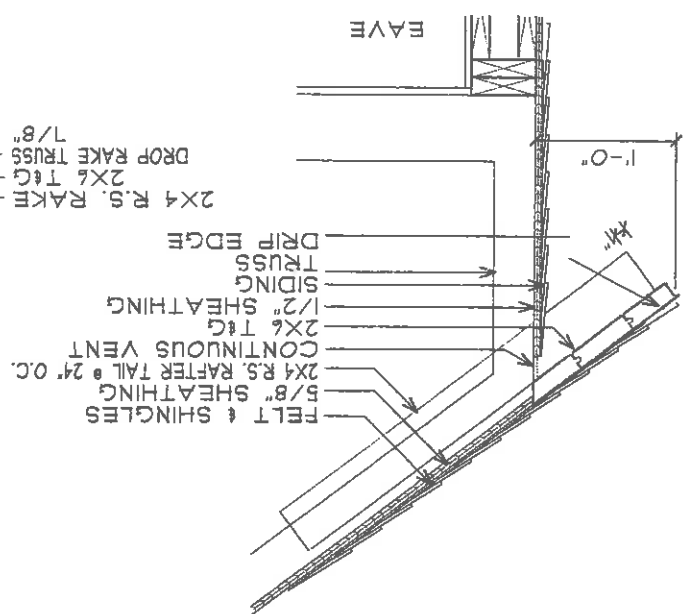
NO.	DATE	DESCRIPTION
1		STATUS: PRELIMINARY

ELEVATIONS
SCALE: AS NOTED
DWG. BY: RAM
DWG. IN: HOUSE PLANS

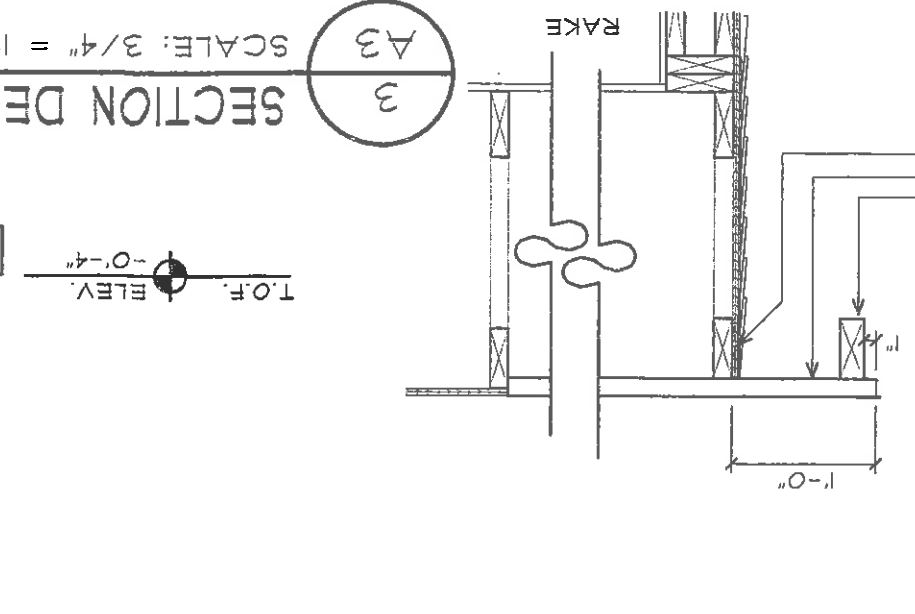
COPYRIGHT 2008
Robert Mitchell
Unauthorized alteration or addition to this document is a violation of law.

O'ROURKE HOUSE GARAGE ROBERT MITCHELL ARCHITECT
29 THACHER PARK ROAD
VOORHEESVILLE, NEW YORK 12186
PH: 518/745-4511 FAX: 518/745-2950

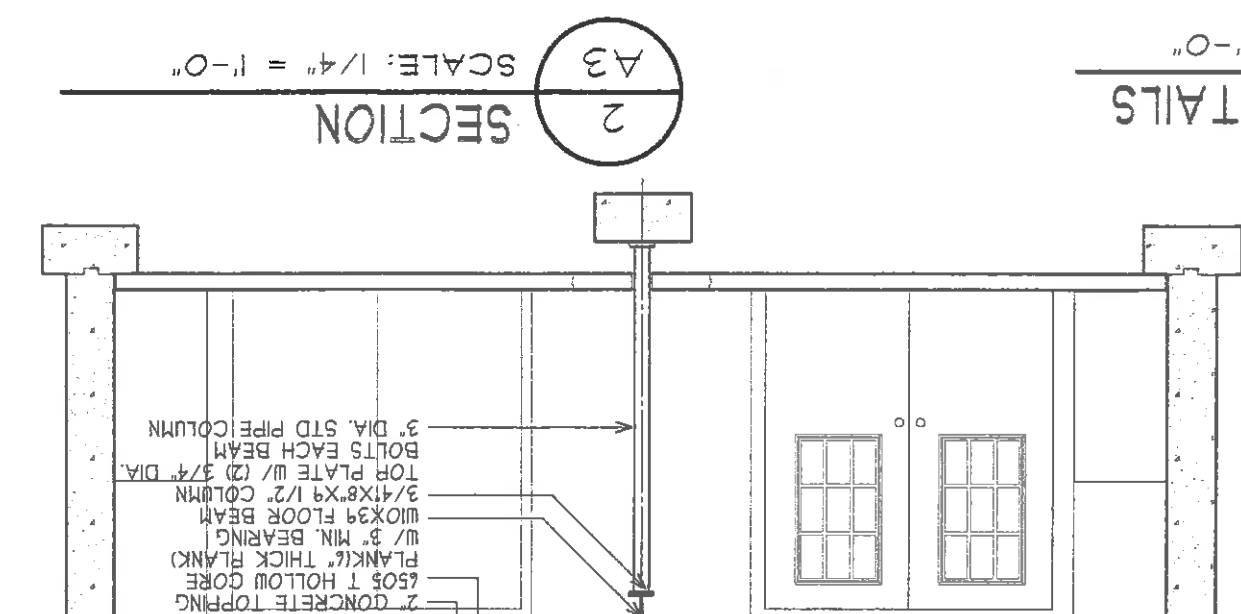
01 TIME: 7:43 AM



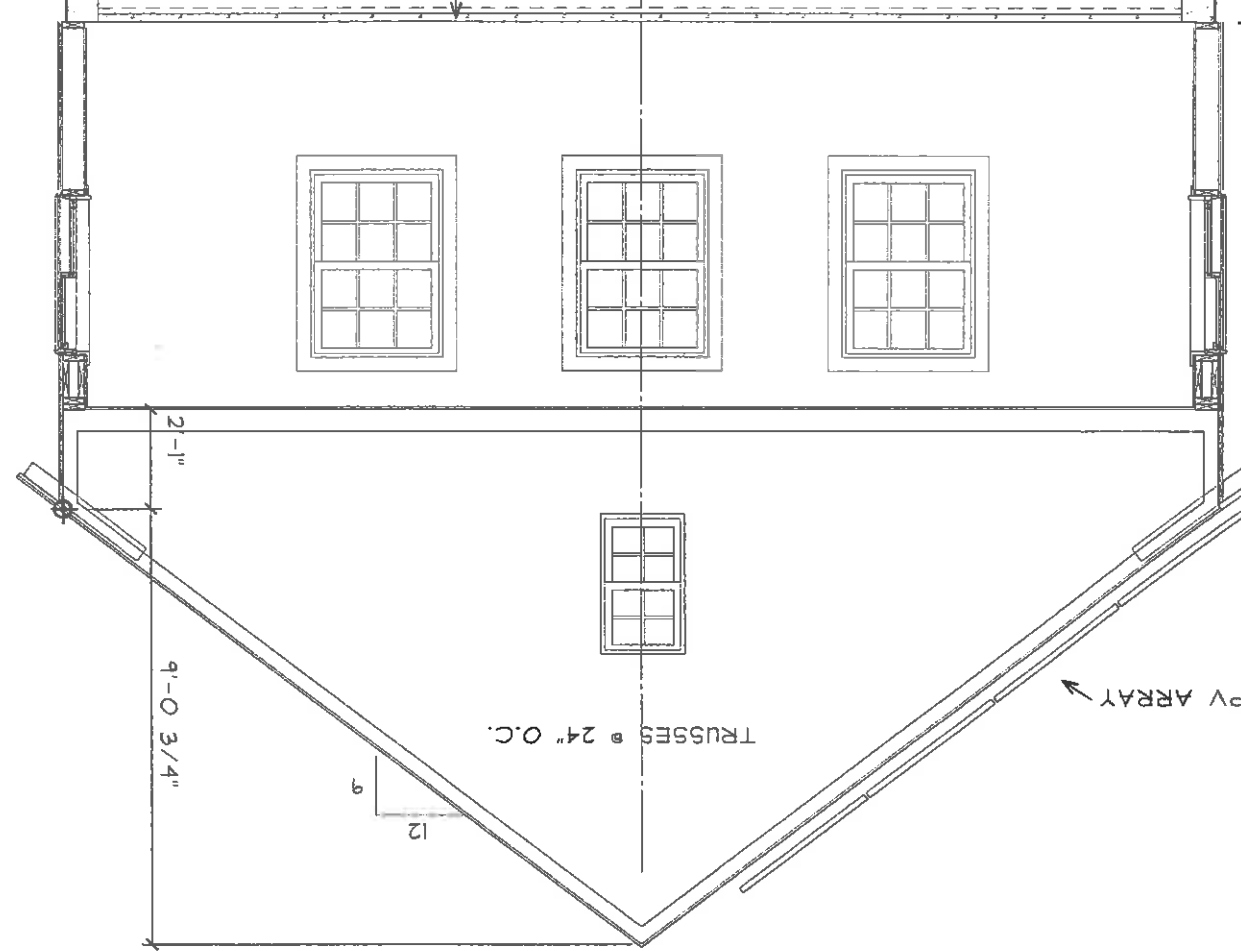
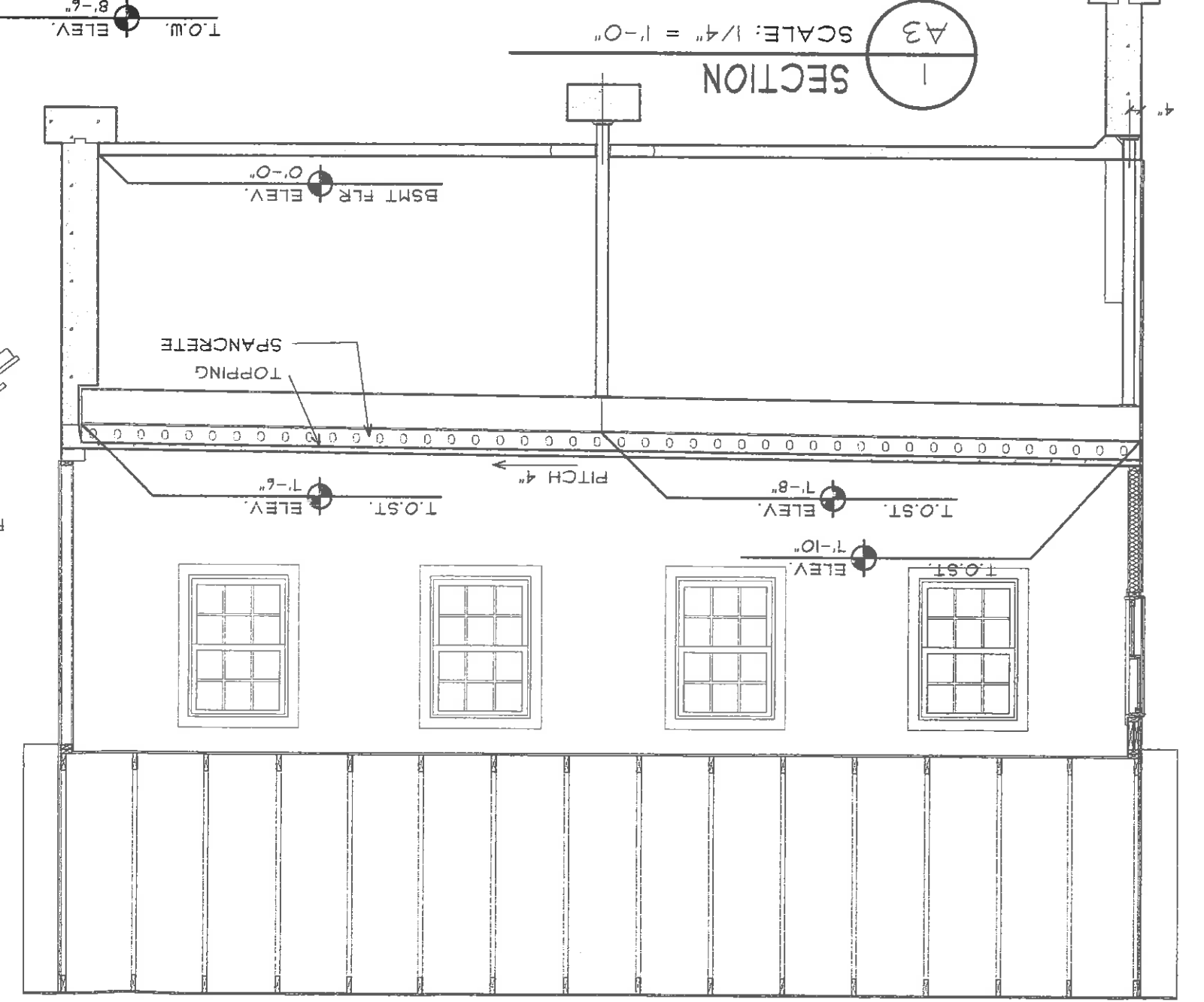
SECTION 3
SCALE: 3/4" = 1'-0"



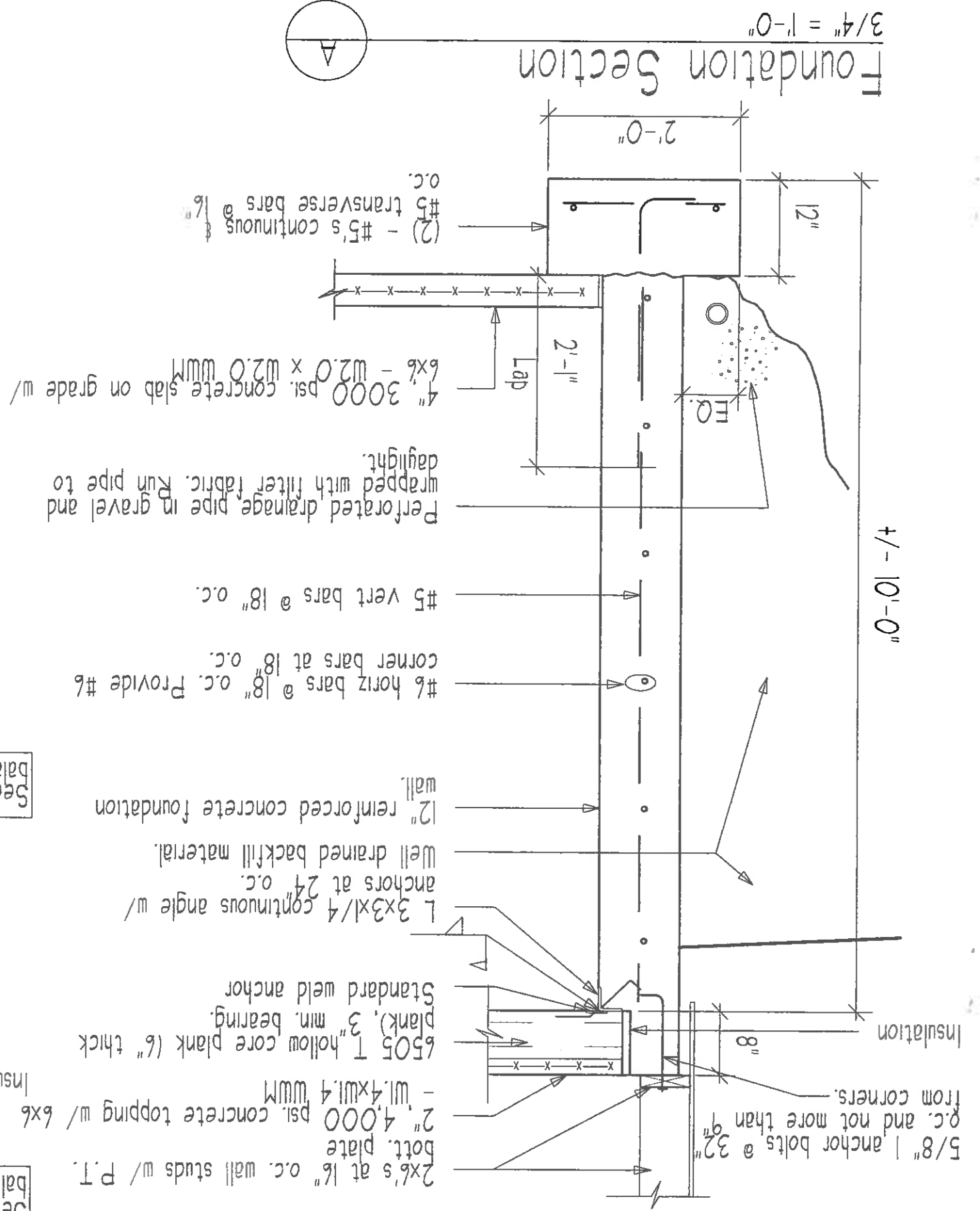
SECTION 2
SCALE: 1/4" = 1'-0"



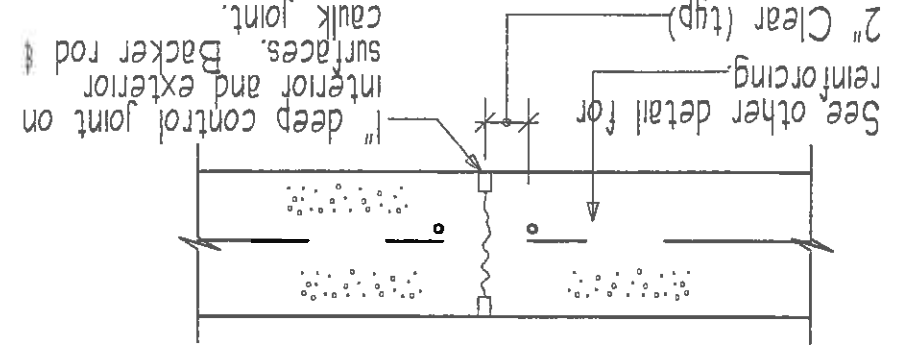
SECTION 1
SCALE: 1/4" = 1'-0"



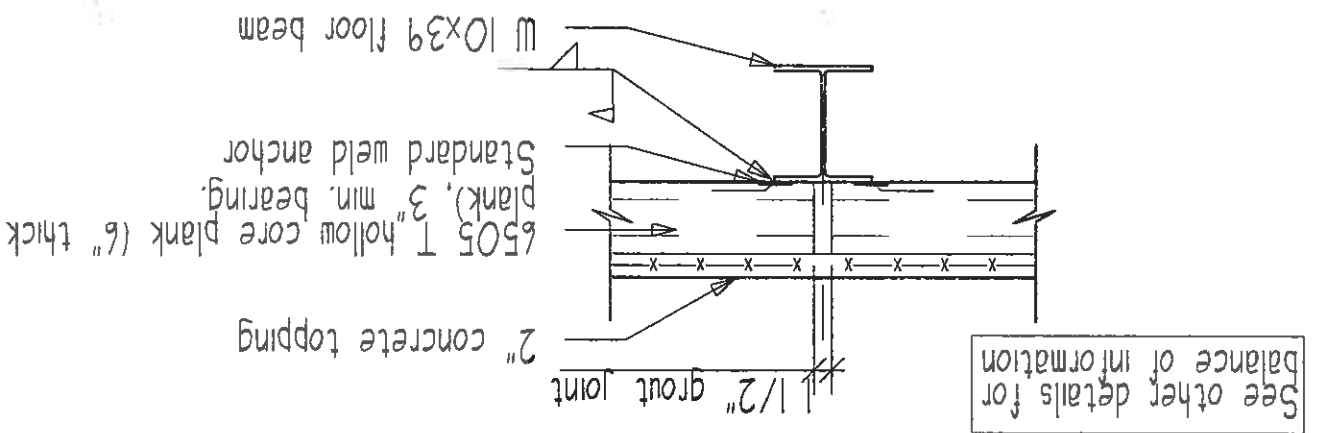
DWG DATE: 10-2-2004
 DWG BY: RAM
 DWG OF: HOUSE PLANS
 STATUS: PRELIMINARY
 SECTIONS
 SCALE: AS NOTED
 COPYRIGHT 2008 Robert Mitchell
 Unauthorized alteration or addition to this document is a violation of Law.
O'ROURKE HOUSE GARAGE
ROBERT MITCHELL ARCHITECT
 29 THACHER PARK ROAD
 VOORHEESVILLE, NEW YORK 12186
 PH: 518/765-4571 FAX: 518/765-2950
 PLOT TIME: 7:43 AM
A3



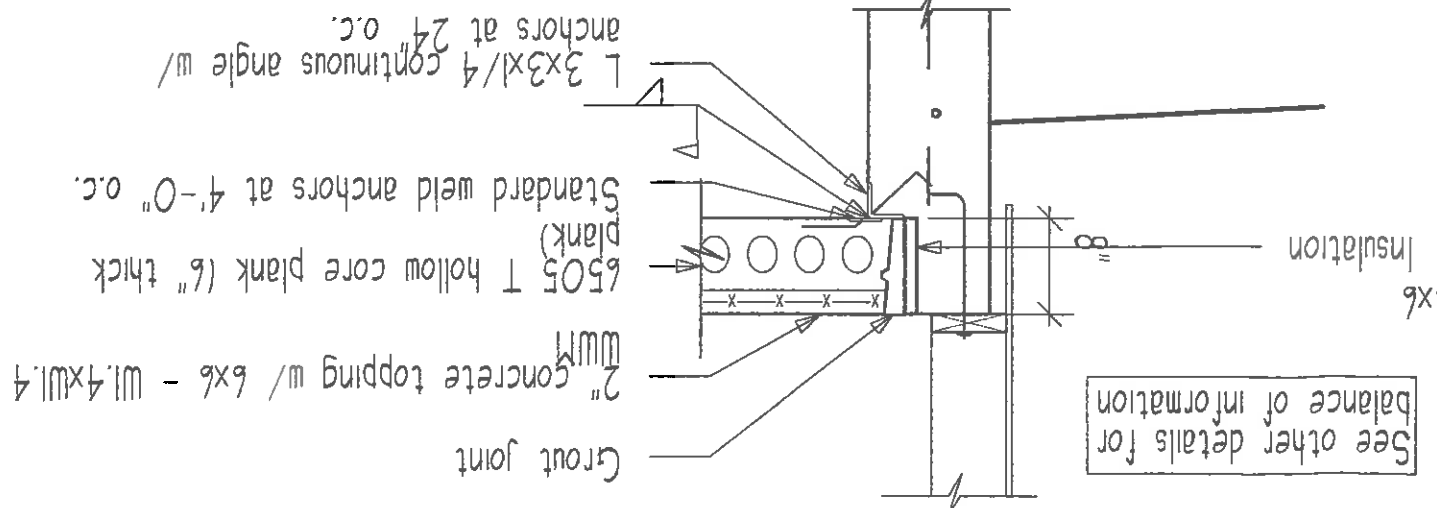
Plan Detail - Vertical Control Joint
no scale



Section - Floor Plank
3/4" x 1'-0"



Section - Floor Plank
3/4" = 1'-0"



PILOT TIME: 7:43 AM

DWG DATE: 10-2-2004

DESCRIPTION: DETAILS

SCALE: AS NOTED

DWG. BY: RAM

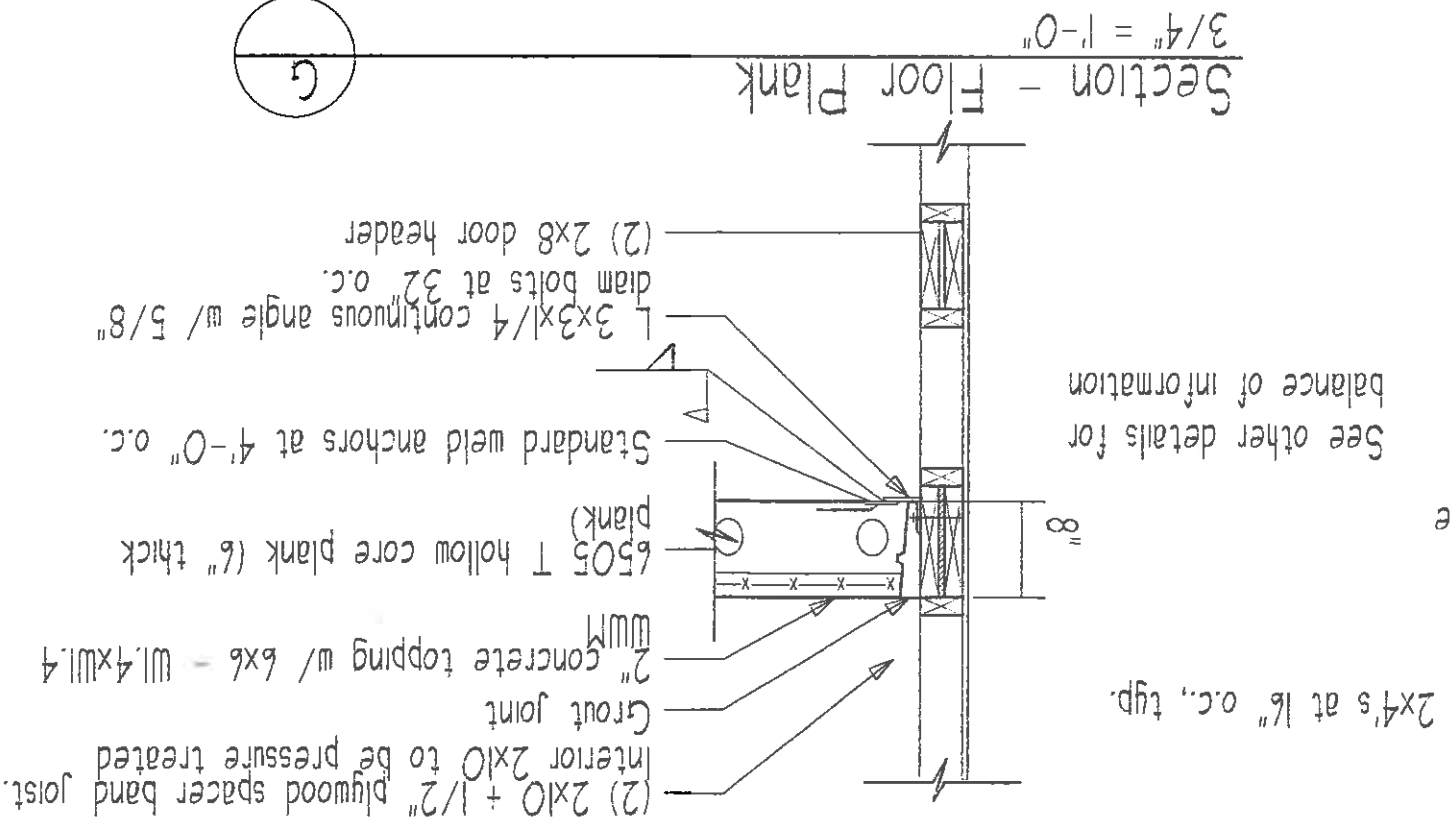
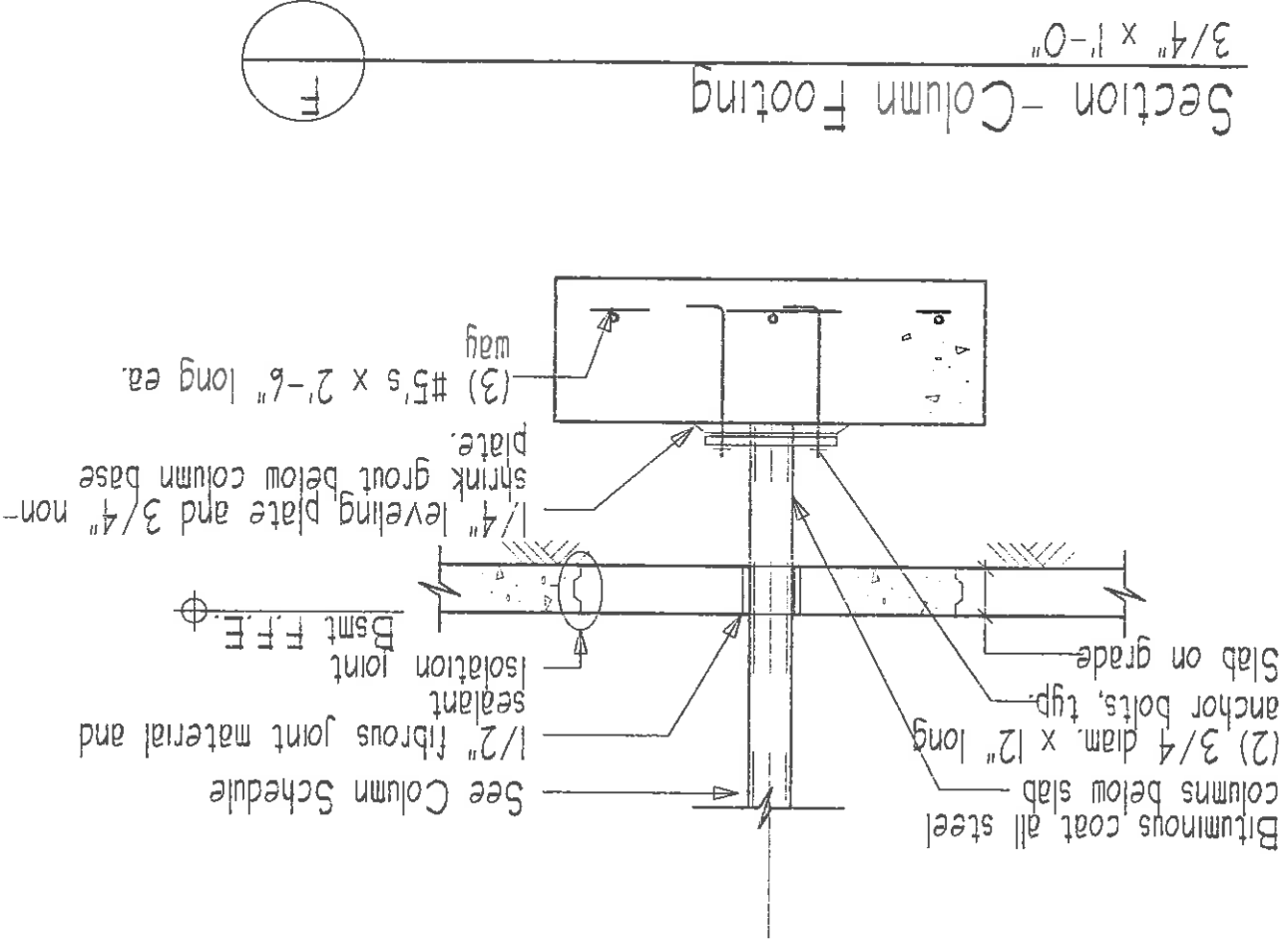
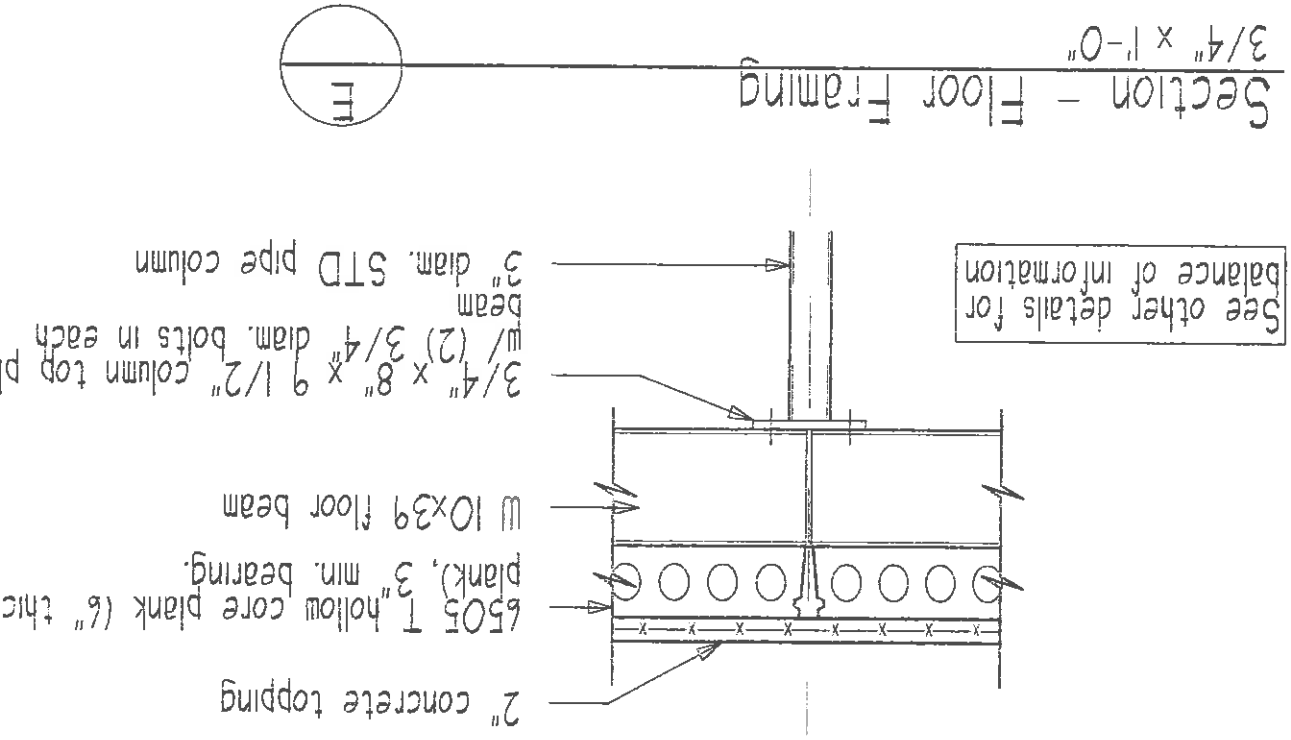
DWG. I/F: JMSB, PLM/US

STATUS: PRELIMINARY

COPYRIGHT 2006 Robert Mitchell. Unauthorized alteration or addition to this document is a violation of Law.

O'ROURKE HOUSE GARAGE ROBERT MITCHELL ARCHITECT

29 THACHER PARK ROAD
VOORHEESVILLE, NEW YORK 12186
PH: 518/7165-4511 FAX: 518/7165-2950



GENERAL NOTES

- THESE DRAWINGS ARE FOR THE GENERAL LAYOUT, DIMENSIONS AND MATERIAL DETAILS OF THE PROJECT. THEY ARE NOT TO BE USED WITHOUT THE ACCOMPANYING SPECIFICATIONS. IN THE EVENT OF DISCREPANCIES BETWEEN THESE DRAWINGS AND THE SPECIFICATIONS, THE CONTRACTOR SHALL NOTIFY THE ARCHITECT IN WRITING PRIOR TO PROCEEDING AND SHALL NOT PROCEED WITHOUT DIRECTION FROM THE ARCHITECT.
- ANY/ALL DIMENSIONS SHALL BE FIELD VERIFIED. CONTRACTORS & SUB-CONTRACTORS SHALL BE RESPONSIBLE FOR BRINGING ANY DIMENSIONAL DISCREPANCIES TO THE ATTENTION OF THE ARCHITECT IN WRITING. PLAN DIMENSIONS ARE NOMINAL. DETAIL DIMENSIONS ARE ACTUAL UNLESS OTHERWISE NOTED
- A SET OF PLANS BEARING THE ARCHITECT'S & ENGINEER'S SEALS SHALL BE KEPT AT THE SITE AT ALL TIMES DURING CONSTRUCTION.
- ANY ALTERATION TO DRAWINGS BY ANYONE EXCEPT A LICENSED ARCHITECT OR ENGINEER IS PROHIBITED BY NEW YORK STATE EDUCATION LAW. IF ANY ITEM BEARING THE SEAL OF AN ARCHITECT IS ALTERED, THE ALTERING ARCHITECT/ENGINEER SHALL AFFIX TO HIS/HER ALTERATION HIS/HER SEAL AND THE NOTATION "ALTERED BY" FOLLOWED BY HIS/HER SIGNATURE, DATE OF SUCH ALTERATION AND A SPECIFIC DESCRIPTION OF THE ALTERATION.
- DIMENSIONS SHALL NOT BE DETERMINED BY SCALING THE DRAWINGS.
- TYPICAL DETAILS ARE TO BE USED UNLESS OTHERWISE NOTED.
- ALL WORK SHALL COMPLY WITH N.Y.S. UNIFORM FIRE PREVENTION AND BUILDING CODE.
- ELECTRICAL WORK SHALL COMPLY WITH THE NATIONAL ELECTRICAL CODE.
- OPENINGS FOR EMERGENCY USE SHALL COMPLY WITH ARTICLE R310 OF THE NYS BUILDING CODE.



PLOT TIME 7:43 AM

A5

NO.	DATE	DESCRIPTION
1	10-2-2004	DWG DATE
2		
3		
4		
5		

STATUS: PRELIMINARY

DETAILS

SCALE: AS NOTED

DWG. BY: RAM

DWG. OF: ROUSE PLANS

COPYRIGHT 2006 Robert Mitchell

Unauthorized alteration or addition to this document is a violation of law.

O'ROURKE HOUSE GARAGE

ROBERT MITCHELL ARCHITECT

29 THACHER PARK ROAD
VOORHEESVILLE, NEW YORK 12186
PH: 518/7145-4571 FAX: 518/7145-2950

VOORHEESVILLE, NEW YORK